

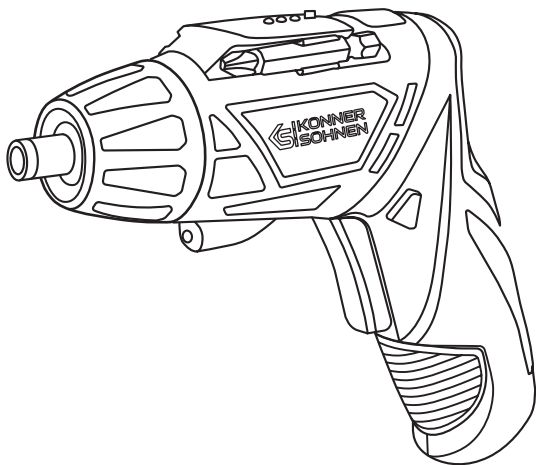
Please, read this manual  
carefully before use!

Owner's Manual



# Cordless Screwdriver

KS SD-3.6V





Thank you for opting for **Könner & Söhnen®** products. This manual contains a brief description of safety, setup and use. More information can be found on the official importer's website in the support section: **[konner-sohnen.com/manuals](http://konner-sohnen.com/manuals)**

You can also go to the support section and download the manual by scanning the QR code or on the website of the official importer of **Könner & Söhnen®** at **[www.konner-sohnen.com](http://www.konner-sohnen.com)**



*Please, read this manual carefully before use!*

The manufacturer of **Könner & Söhnen®** products reserves the right to make changes that may not be reflected in this manual, namely:

- The manufacturer reserves the right to make changes in the product design, configuration and construction.
- The images and drawings in this manual are for reference only and may differ from the actual components and inscriptions on the products.

Contact information that you are free to use in case of any problems can be found at the end of this manual. All information in this manual is correct to the best of our knowledge and belief at the date of its publication. The current list of service centers can be found on the official importer's website at **[www.konner-sohnen.com](http://www.konner-sohnen.com)**



**ATTENTION - DANGER!**



**Failure to follow the recommendations marked with this sign may lead to serious injury of the operator or third parties.**






**IMPORTANT!**



**Useful information while operating the machine.**

- This power tool is intended to be used tightening or unscrewing screws.
- This power tool may not be used to do other thing out of the described scope.

Some of the following symbols may be used on this product. Please study them and learn their meaning. Proper interpretation of these symbols will allow you to operate the product better and safer.

	Read all safety warnings and all instructions. Failure to follow the warnings and instructions may result in electric shock, fire and/or serious injury.
	Approved in accordance with the relevant directives.
	Recycle end-of-life product in accordance with local regulations.

## GENERAL POWER TOOL SAFETY WARNINGS

## 3



**WARNING!**



**Read all safety warnings and all instructions. Failure to follow the warnings and instructions may result in electric shock, fire and/or serious injury.**

**Save all warnings and instructions for future reference.**

The term «power tool» in the warnings refers to your mains-operated (corded) power tool or battery-operated (cordless) power tool.

### 1. Work area safety

- Keep work area clean and well lit. Cluttered or dark areas invite accidents.
- Do not operate power tools in explosive atmospheres, such as in the presence of flammable liquids, gases or dust. Power tools create sparks which may ignite the dust or fumes.
- Keep children and bystanders away while operating a power tool. Distractions can cause you to lose control.

### 2) Electrical safety

Do not expose power tools to rain or wet conditions. Water entering a power tool will increase the risk of electric shock or tool breakage.

### 3) Personal safety

- Stay alert, watch what you are doing and use common sense when operating a power tool. Do not use a power tool while you are tired or under the influence of drugs, alcohol or medication. A moment of inattention while operating power tools may result in serious personal injury.

- b) Prevent unintentional starting. Ensure the switch is in the off-position before connecting to power source, picking up or carrying the tool. Carrying power tools with your finger on the switch or energising power tools that have the switch on invites accidents.
- c) Do not overreach. Keep proper footing and balance at all times. This enables better control of the power tool in unexpected situations.
- d) Dress properly. Do not wear loose clothing or jewellery. Keep your hair, clothing and gloves away from moving parts. Loose clothes, jewellery or long hair can be caught in moving parts.

#### 4) Power tool use and care

- a) Do not force the power tool. Use the correct power tool for your application. The correct power tool will do the job better and safer at the rate for which it was designed.
- b) Do not use the power tool if the switch does not turn it on and off. Any power tool that cannot be controlled with the switch is dangerous and must be repaired.
- c) Store idle power tools out of the reach of children and do not allow persons unfamiliar with the power tool or these instructions to operate the power tool. Power tools are dangerous in the hands of untrained users.
- d) Maintain power tools. Check for misalignment or binding of moving parts, breakage of parts and any other condition that may affect the power tool's operation. If damaged, have the power tool repaired before use. Many accidents are caused by poorly maintained power tools.
- e) Use the power tool, accessories and tool bits etc. in accordance with these instructions, taking into account the working conditions and the work to be performed. Use of the power tool for operations different from those intended could result in a hazardous situation.

#### 5) Battery tool use

- a) Recharge only with the charger specified by the manufacturer.
- b) Under abusive conditions, liquid may be ejected from the battery; avoid contact. If contact accidentally occurs, flush with water. If liquid contacts eyes, additionally seek medical help. Liquid ejected from the battery may cause irritation or burns.

#### 6) Service

Have your power tool serviced by a qualified repair person using only identical replacement parts. This will ensure that the safety of the power tool is maintained.

## SCREWDRIVER SAFETY WARNING

4



**WARNING!**



**Hold power tool by insulated gripping surfaces, when performing an operation where the fastener may contact hidden wiring.** Fasteners contacting a «live» wire may make exposed metal parts of the power tool «live» and could give the operator an electric shock.

## Special Safety Instructions for Battery packet and Charger

If under extreme conditions any electrolyte should escape from the battery, it's essential to avoid contact with skin. If electrolyte does come into contact with your skin, rinse it off with water. In the event of electrolyte contact with your eyes, it's essential to consult a doctor.

- a) This appliance is not intended for use by persons (including children) with reduced physical, sensory or mental capacities, or lack of experience and knowledge, unless they have been given supervision or instruction concerning use of the appliance by a person responsible for their safety.
- b) Children should be supervised to ensure that they do not play with the appliance.
- c) Never let moisture, rain or splashed water reach the charging location.
- d) The ambient temperature must not exceed 40°C. Never expose the device to direct insulation.
- e) Storage-battery packets, which are defective or damaged or can no longer be recharged, must be disposed of as hazardous waste. Hand them over at a special collection point. Never harm our environment. Do not throw unusable storage-battery packets away into the domestic waste, into fire or into water.
- f) If the charging cable or input is damaged, replacement can only be carried out by the supplier or its repair shop. Have repairs performed only by an authorized technician.
- g) Never discharge the battery packet completely and recharge occasionally if not used for a prolonged period.



**WARNING!**



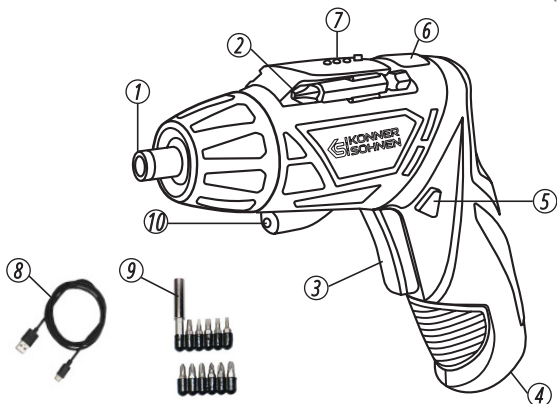
**This machine produces an electromagnetic field during operation. This field may under some circumstances interfere with active or passive medical implants. To reduce the risk of serious or fatal injury, we recommend persons with medical implants to consult their physician and the medical implant manufacturer before operating this machine.**

## MAINTENANCE AND CLEANING

5

- To clean, always use a dry or moist, but not wet, towel.
- Many cleaning agents contain chemical substances which may cause damage to the plastic parts of the machine. Therefore do not use any strong or inflammable cleaners such as petrol, paint thinner, turpentine or similar cleaning agents.
- Always keep air ventilation holes free of dust deposits to prevent overheating.

<b>Model</b>	<b>KS SD-3.6V</b>
<b>Rated Voltage</b>	DC 3.6V
<b>No-load Speed</b>	0-230 min <sup>-1</sup>
<b>Bits holder</b>	internal hexagon 1/4
<b>Battery cell</b>	3.6V 1300mAh
<b>Max. torque</b>	3,5 Nm
<b>Battery type</b>	Li-Ion
<b>Net weight</b>	0.37 kg



1. Bits holder
2. Bits (2pcs 50mm)
3. On/off switch
4. Charging socket

5. Left/Right switch
6. Folding button
7. Battery indicator
8. USB charging cable

9. A set of bits (11 units of 25 mm each, 1 unit extension)
10. Work area illumination

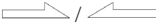


## Charging

- When the indicator light starts burning this means the battery pack is now being charged. When the red indicator light turned off, this means the battery is fully charged.
- Unplug the power cord after charging.

## On/off switch

To switch on the tool, press the on/off switch

## Left/right switch

-  shown on the left/right switch.
- Set the Left/right switch to .
- Set the Left/right switch to .
- Change the direction of rotation only when the machine is not in operation !

## Caution

Operating the machine with a low speed for a long time will increase the risk that the motor will be overheated. To prevent overheating, let the motor cool down regularly ( Stop using the machine for 15 minutes).

## Folding machine

Press the folding button, rotate the handle.

## WARRANTY SERVICE TERMS

## 8

The international manufacturer warranty is 1 year. The warranty period starts from the date of purchase. In cases when warranty period is longer than 1 year according to local legislation please contact your local dealer. The Seller which sells the product is responsible for granting the warranty. Please contact the Seller for warranty. Within the warranty period, if the product fails because of defects in the production process, it will be exchanged on the same product or repaired.

All faults caused by the manufacturer during the warranty period will be eliminated free of charge. Warranty repair is carried out only if you have a fully completed warranty card, the Buyer's signature of acceptance of the warranty terms, as well as a document supporting the purchase (cash receipt, sales slip or invoice). In the absence thereof, as well as in the event of errors or corrections not authenticated by the seller's seal or illegible inscriptions in the warranty card or tear-off coupon, no warranty repair is carried out, no objections to quality are accepted and the warranty card is withdrawn by the service center as invalid. The device is accepted for repair clean and full.



# EC Declaration of Conformity

Nr. 198

The following products have been tested by us with the listed standards and found in compliance with the European Community Directive 2014/30/EU relating to electromagnetic compatibility, Directive 2006/42/EC relating to machinery.

Manufacturer: DIMAX INTERNATIONAL GmbH  
Address: Flinger Broich 203, 40235 Duesseldorf, Germany  
Product: Cordless screwdriver "Köner & Söhnen"  
Type / Model: KS SD-3.6V

The statement is based on a single evaluation of above mentioned products. It does not imply an assessment of the whole production and does not permit the use of the test lab. logo. The manufacturer should ensure that all product in series production are in conformity with the product sample detailed in this report. The applicant should hold the whole technical report at disposal of the competent all the right.

Applied EC Directives: 2014/30/EU Electromagnetic compatibility Directive (EMC)  
2006/42/EC Machinery Directive

Applied Standards: EN 62841-1:2015+A11:2022  
EN 62841-2-2:2014  
EN IEC 55014-1:2021  
EN IEC 55014-2:2021  
EN IEC 61000-3-2:2019+A1:2021  
EN 61000-3-3:2013+A1:2019+A2:2021



**Issued Date:** 2024-07-19  
**Place of issue:** Duesseldorf  
**Director:** Fomin P.

**DIMAX**  
International GmbH  
Flinger Broich 203 40235 Düsseldorf  
USt-ID DE296177274  
koerner-soehnen.com

We DIMAX INTERNATIONAL GmbH hereby declare that specified above conforms covering European Parliament and Council Directives, 2006/42/EC of 17 May 2006 Machinery Directive, Electromagnetic compatibility Directive (EMC) 2014/30/EC of 26 February 2014. The CE mark above can be used under the responsibility of manufacturer. After completion of an EC declaration of Conformity and compliance with all relevant EC directives.



## CONTACTS

### Deutschland:

DIMAX International GmbH Flinger  
Broich 203 -FortunaPark- 40235  
Düsseldorf, Deutschland  
[www.konner-sohnen.com](http://www.konner-sohnen.com)

### Ihre Bestellungen

[orders@dimaxgroup.de](mailto:orders@dimaxgroup.de)

### Kundendienst, technische Fragen und Unterstützung

[support@dimaxgroup.de](mailto:support@dimaxgroup.de)

### Garantie, Reparatur und Service

[service@dimaxgroup.de](mailto:service@dimaxgroup.de)

### Sonstiges

[info@dimaxgroup.de](mailto:info@dimaxgroup.de)

---

### Polska:

DIMAX International  
Poland Sp.z o.o.

Południowa 8, 05-830,  
Stara Wieś, Polska,

[info.pl@dimaxgroup.de](mailto:info.pl@dimaxgroup.de)

---

### Україна:

ТОВ «Техно Трейд КС»,  
вул. Електротехнічна 47,  
02222, м. Київ, Україна  
[sales@ks-power.com.ua](mailto:sales@ks-power.com.ua)